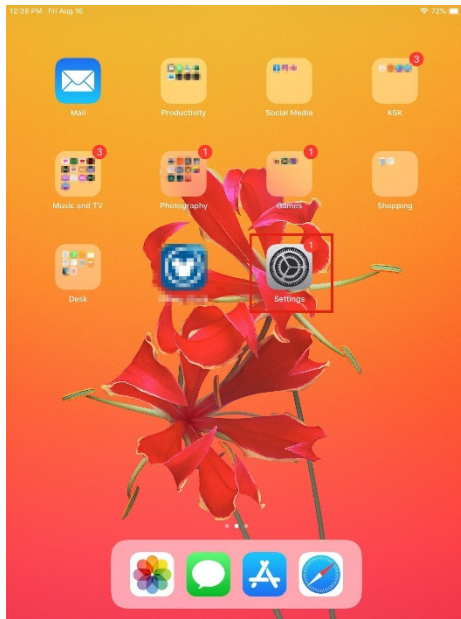


# Instructions for BarryUWireless (iPad)

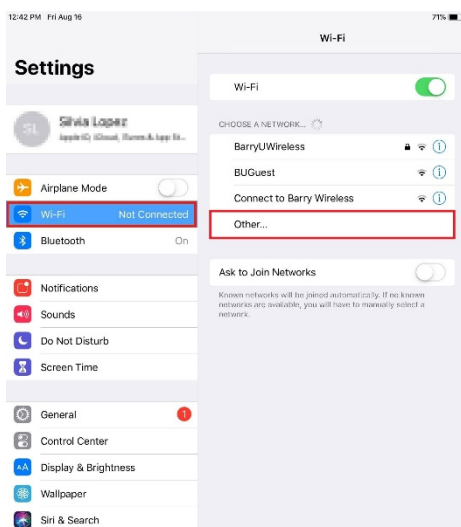
Below are the instructions for connecting Apple's iPad to access Barry's wireless network.

## BarryUWireless Configuration

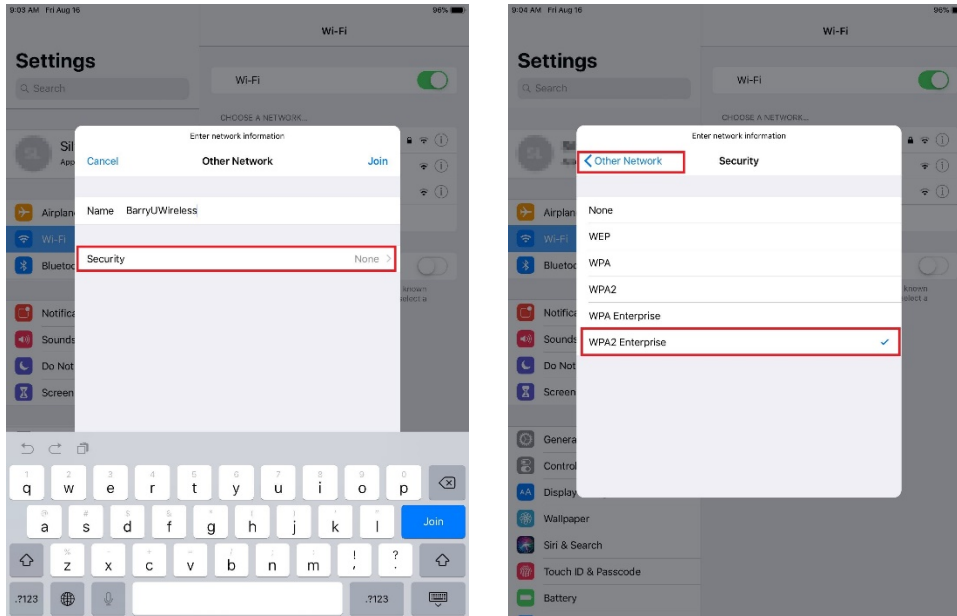
1. Tap on the **Settings** icon on the *Home* screen.



2. In **Settings**, tap **Wi-Fi** and turn "Wi-Fi" **ON** if it is off. Under *Choose a Network*, tap **Other...**

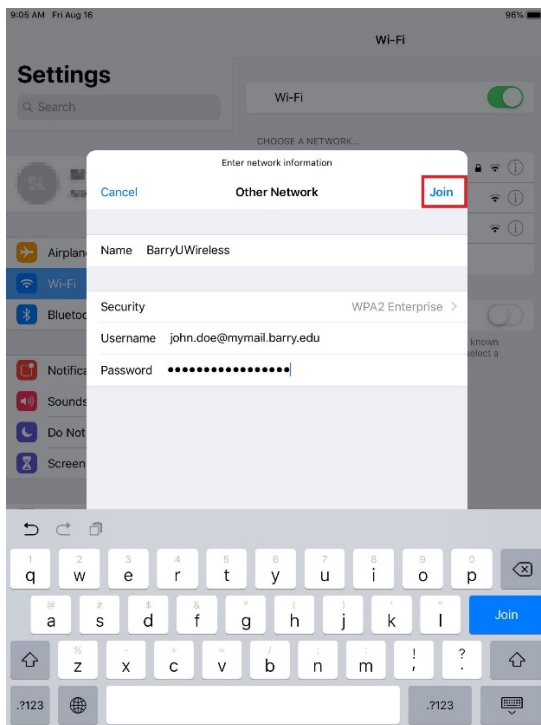


- For the Name, enter **BarryUWireless** (the name is case-sensitive). Click on **Security** and select **WPA2 Enterprise**. Click **Other Network** to go back.

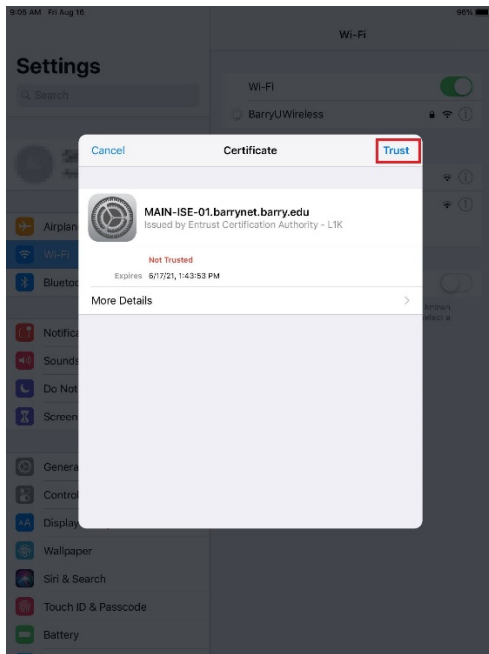


- Enter your Barrynet username and password to authenticate yourself on the wireless network. Click **Join**.

- ex. Username for students: **john.doe@mymail.barry.edu**
- ex. Username for Faculty/Staff: **jdoe**



5. When the warning window for **Certificate** comes up, tap **Trust** to continue.



6. Once you are connected, you will see **BarryUWireless** with a checkmark next to its name. You can push the **Home** button to go to the Home screen.

